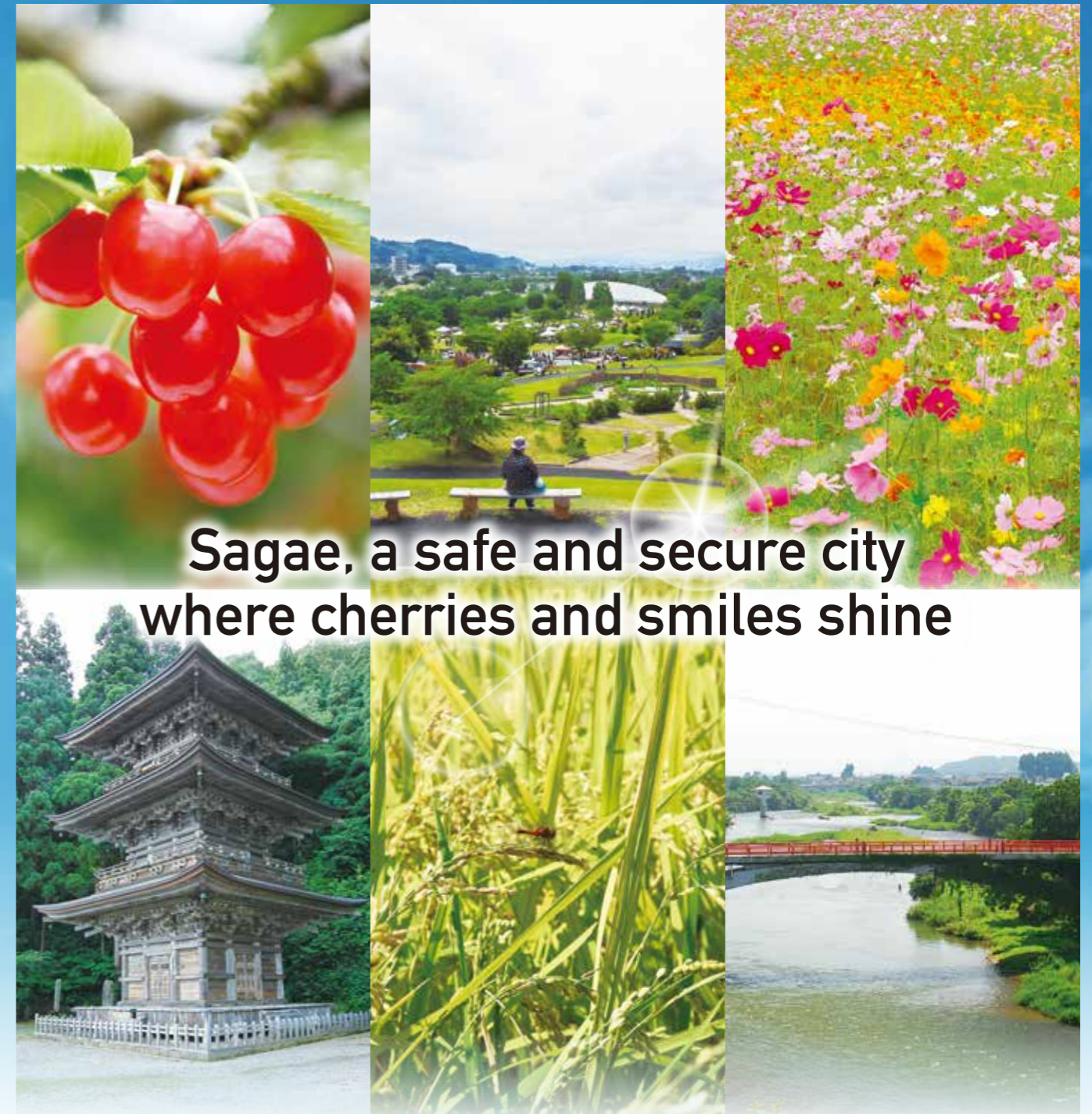




City Mascot
"CHERRIN"

CHERRIN is a cherry fairy. Its birthday is on the third Sunday of June. The cherry on the right side of its head is a Satonishiki cherry, while the one on the left is a Benishuho. The pattern on its belly is of an azalea flower. CHERRIN also wears a soba noodle scarf that is changed to new soba noodles when a new season's buckwheat is harvested.



**Sagae, a safe and secure city
where cherries and smiles shine**



Issued by : Sagae City, Yamagata Prefecture
1-9-45, Chuo Sagae City, Yamagata Prefecture 991-8601, Japan
Tel : 0237-86-2111 Fax : 0237-86-7220
<https://www.city.sagae.yamagata.jp>
Date of issue : March, 2022



Sagae City Outline

Introduction of Sagae City



Sister Cities of Sagae

Andong City, Republic of Korea
Giresun City, Republic of Turkey
Samukawa Town, Kanagawa Prefecture

Description of the city and its symbols

Description of Sagae city

The great Mogami River and a clear stream, the Sagae River, flow around Sagae city, almost as if surrounding it. There are great views of Mount Gassan and Mount Hayama, and in the distance, of the Zao and Asahi mountain ranges. The city offers plenty of beautiful nature and wonderful views during all four seasons. It is also home to a history and culture nurtured for more than a thousand years.

- Location (City Office) : Long. 140° 16' E., 38° 22' N
 - City Area : 139.03 square kilometers
 - Population : 40,396 people
 - Households : 14,452
- ※Data from February 28, 2022



City Emblem

(Established on July 29, 1995)
The design is made from the hiragana letter "さ" (sa). The wings in the upper part signify the effort to grow, while the circle in the lower part is symbolic of its people harmonizing well together.



City Tree : Cherry (Sakurambo)

City Flower : Azalea

(Legislated on July 2, 1984)

To promote the city's bright beauty of nature, the azalea and cherry were chosen.



City Greenery : Plantain Lily

(Legislated on October 27, 2004)

The Sagae Hosta (Plantain Lily) is a beautiful plant that has large leaves with bright yellow trimming. It is the only plant with the same name as the city, "Sagae". This symbolism will be passed onto the next generations and extended to the residents of Sagae.



City Fish : Sagae River Ayu (sweetfish)

(Legislated on June 18, 2014)

The Sagae River is a symbol of bountiful nature. The ayu, or sweetfish, is valued highly because of its shape, aroma when cooked, and taste. The fresh river ayu is to be passed on to the next generations as a local resource.



City Color: Cherry RED

(Legislated on June 18, 2014)

The color of a vivid red cherry gives an image of passion and energy. The kind of cherry in the "Cherry Red" is not specified, but it is the symbolic color of "the cherry country, Sagae, making rapid progress toward the future".



City Festival: Mikoshi no Saiten

(Celebration of the portable shrine)

(Legislated on June 18, 2014)

Mikoshi no Saiten is a festival made popular by the citizens of Sagae. People of all ages attend this festival which became an occasion for exchanges between citizens. This large city event will continue for generations to come.

Andong City, Republic of Korea (Legislated February 4, 1974)



- Population : 156,533 people
 - City Area : 1,521.10 square kilometers
- ※ Data from February 28, 2022

Andong City became a sister city of Sagae after the Republic of Korea consul inquired about growing cherries in Andong since both cities have a similar climate.

Andong city is located at the headwaters of the Nakdong River, the largest river in the Republic of Korea. It is beautiful with elegant nature and hosts the World Heritage Site of Hahoe Folk Village, known for its traditional wooden structures. Also, in its eternal history, justice and courtesy are considered an important part of spiritual culture. This culture has been passed on through generations by famous Confucian scholars from the area. As such, Andong city is called the spiritual culture capital of the Republic of Korea.

Giresun City, Republic of Turkey (Legislated June 25, 1988)



- Population : 143,503 people
 - City Area : 317.0 square kilometers
- ※ Data from December 31, 2021

Giresun is the original birthplace of cherries, and Sagae, the biggest cherry producer in Japan, inquired to become a sister city in order to build a bridge of friendship through cherries.

Giresun, a beautiful city with a mild climate, is located in the northern part of the Republic of Turkey, facing the Black Sea. Mountains come right down to the coast of the Black Sea in this region. The buildings along the steep hills create a characteristic townscape shaped like a belt that runs parallel to the shoreline. It is a region famous for hazelnuts, which grow in orchards farther up in the mountains. It took over 2,000 years for cherries to reach the mainland of Japan from Giresun, but Sagae now produces a great amount of cherries with its massive cherry orchards.

Samukawa Town (Legislated on November 1, 1990)



- Population : 48,584 people
 - Households : 20,237
 - City Area : 13.42 square kilometers
- ※Data from March 1, 2022

It is believed that Sagae City's roots go back to people who came from Samukawa. Because of this common culture and to promote exchange between the people, Samukawa town inquired to become a sister city with Sagae.

Samukawa town is close to the Sagami River, which runs through the middle of Kanagawa Prefecture. It is located within 50 kilometers of the greater Tokyo area and is a part of the Shonan area. The landscape of Samukawa town is blessed with water and green trees, while its history and traditions have been handed down from generation to generation to create a harmony between nature and culture. Hamaorisai, which is held on Marine Day, is well known as a festival of bravery. Over 200,000 visitors from the prefecture and outside come to watch the 40 or more portable shrines (mikoshi) that are brought to the shore of a Chigasaki Beach. As the carriers wildly dance into the water, the climax of this festival fills with excitement.